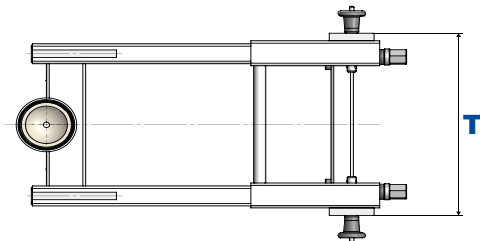
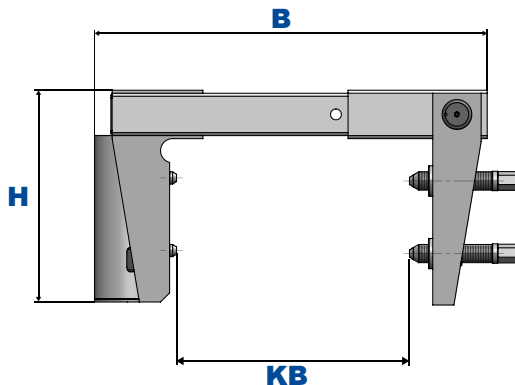
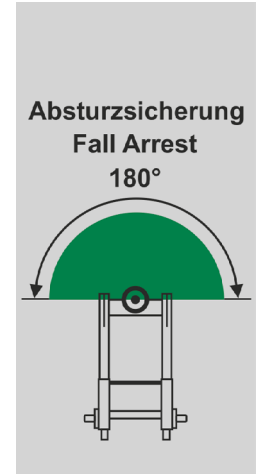
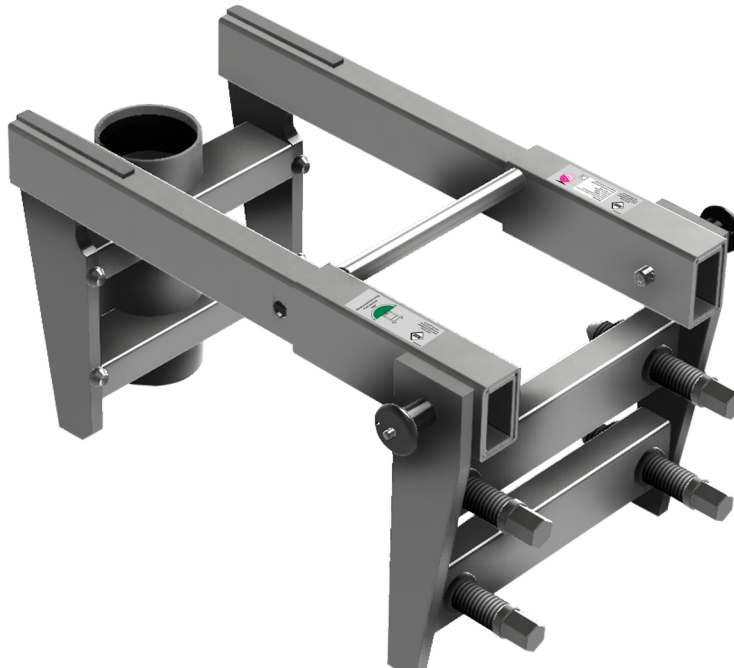


## Mobil slamping sleeve

Component of the attachment devices Cantilever arms type AASS 1 and ASS 1 according to EN 795:2012 and CEN/TS 16415:2017



### Product information:

Order No:	Clamping width (KB)	Height (H)	Width (B)	Depth (T)	Weight
41-69	200mm to 400 mm	350 mm	649 mm	365 mm	35 kg

### Features:

#### Mobile Slamping sleeve for cantilever arm

- Completely made of stainless steel.
- Specially developed for mobile use in security and rescue situations.
- Designed for container edges or walls where frequent installation over different wall thicknesses is necessary.
- Approved for 2 persons.
- Clamping width variable from 200 - 400 mm.
- Ideal for work areas where frequent assembly and dismantling is required.
- The swivel range of the cantilever arm is 360° with one maximum load of 300 kg.
- Compatible with IKAR cantilever arms AASS 1 und ASS 1.