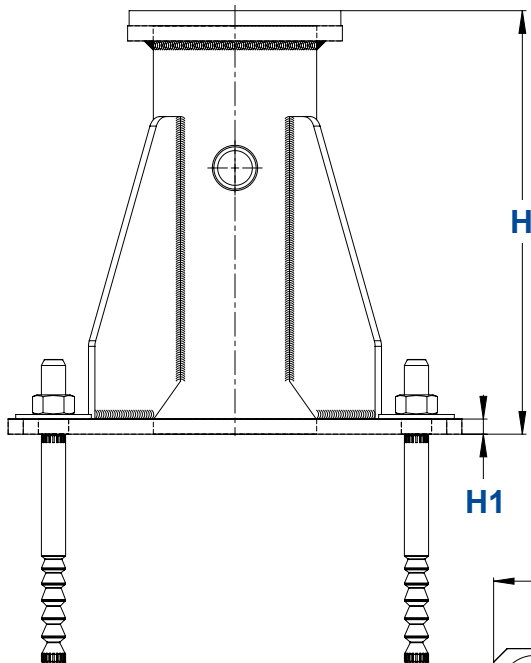
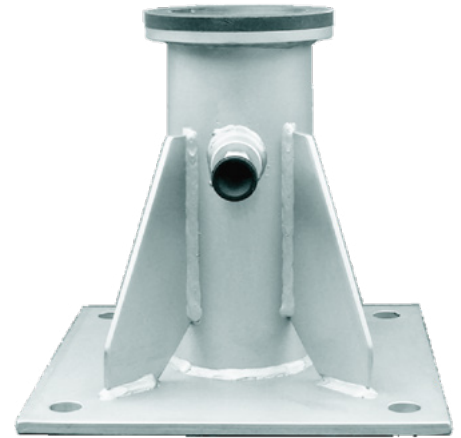
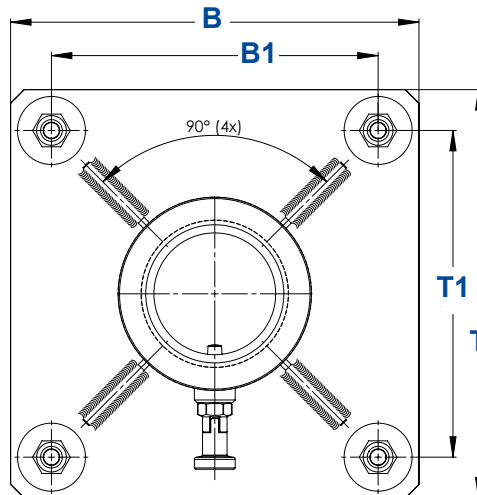


## Ground Sleeve

Component of the attachment devices typ AASS 1 - 4 and ASS 1 - 4 according to EN 795:2012 Typ A und CEN/TS 16415:2017



Drawings not true to scale



Order No:	Height (H)	Height (H1)	Width (B)	Width (B1)	Depth (T)	Depth (T1)	Weight
41-57/1V4	280 mm	10 mm	300 mm	240 mm	300 mm	240 mm	12,0 kg
41-57/7	94 mm		Ø 140 mm				0,49 kg

### Features:

- Stainless steel 1.4571 (V4A).
- Rotary bearing made of resistant PA (polyamide).
- Locking pin (V4A) for fixing the cantilever arm position.
- Can be installed on existing concrete components using a recommended injection anchoring system typ MKT VMZ-AA4 145 M16-30/200 (Order No. 41-57/9a) or steel constructions with M 16 screw connections of quality class 8.8.
- The existing component must withstand the forces occurring in the event of a fall. This test is to be carried out by an architect or statics specialist.
- optional:** Tight, dust- and splash-proof protective cover (Order No.: 41-57/7) (clamp construction) made of PA (Polyamid) can be operated with a special key and with IKAR floor and wall sleeves for Cantilever arms typ AASS 1 - 4 and ASS 1 - 4 compatible.

The assembly instructions for the ground sleeve must be observed.